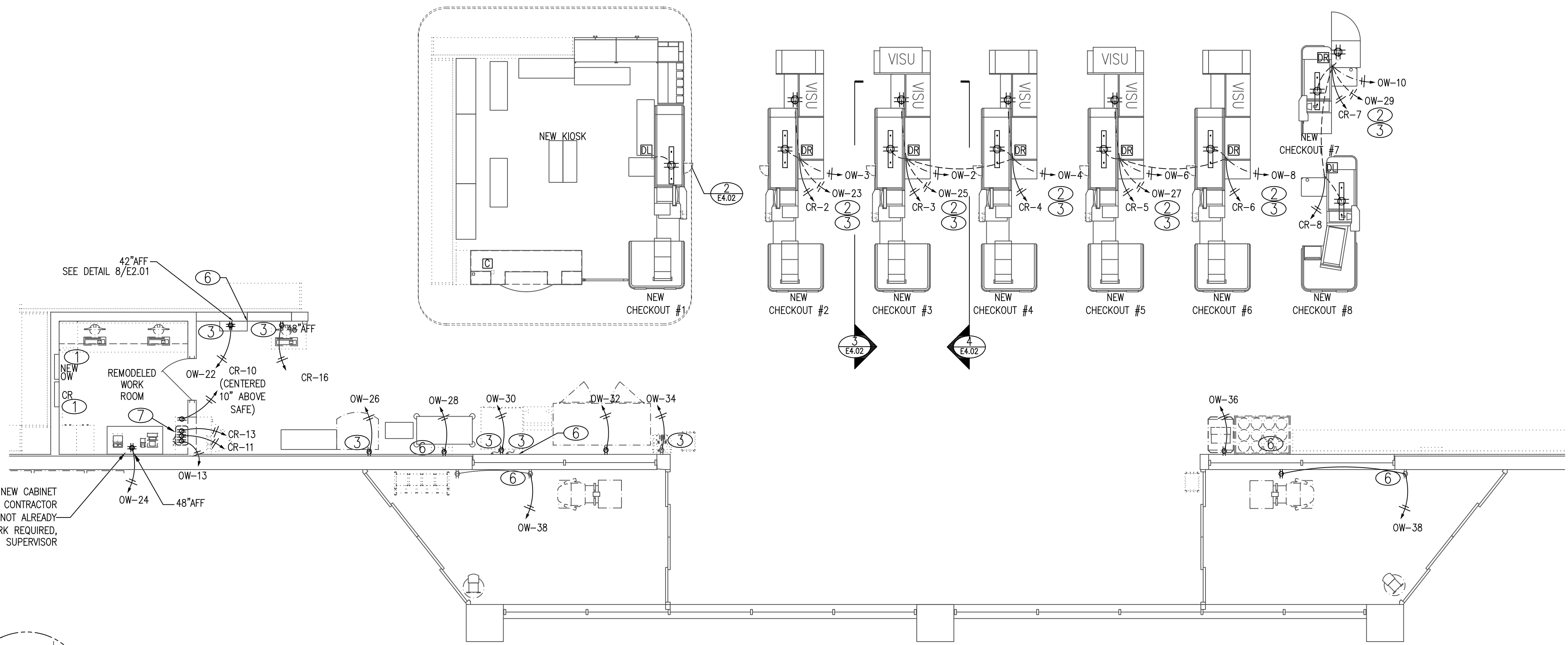


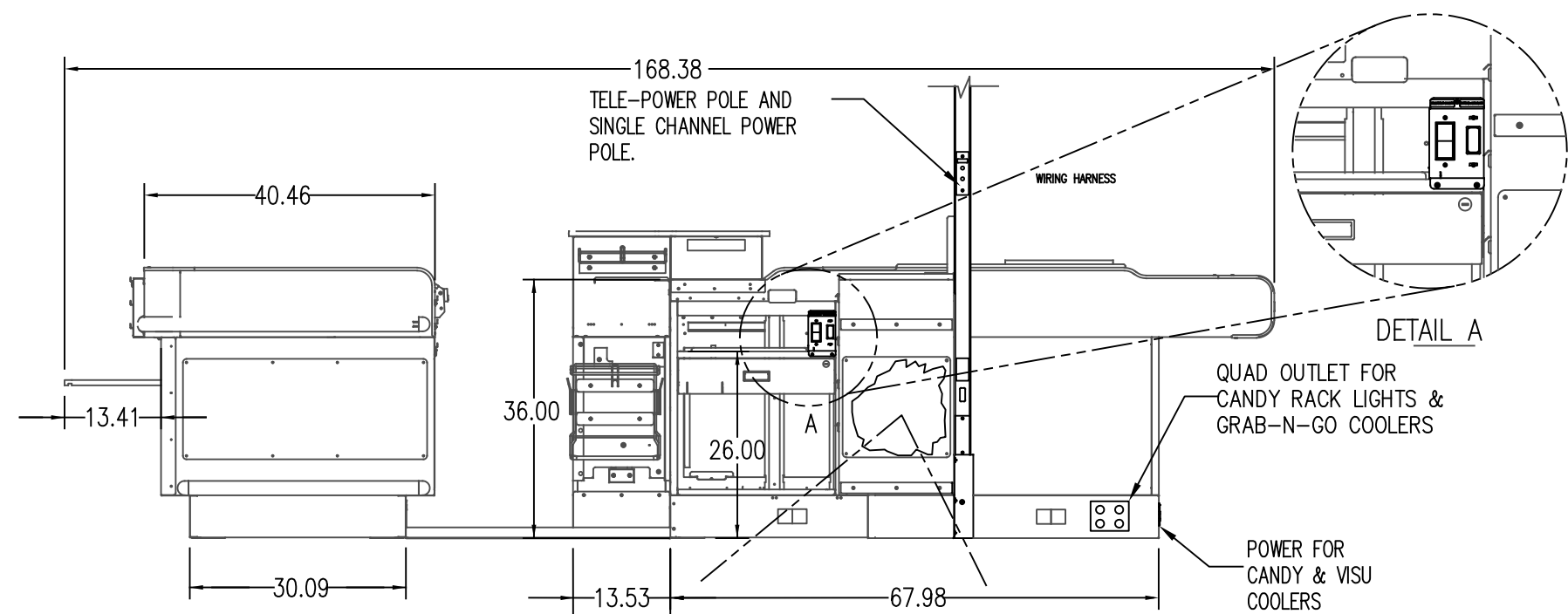
- CHECKOUT INSTALLATION NOTES**
1. SEE SHEET E4.03 FOR WORKROOM, CUSTOMER SERVICE AND CHECKOUT COMMUNICATION WIRING.
 2. MOUNT QUAD OUTLET FLUSH IN THE CHECKOUT STAND FOR THE VISU COOLER(S) AND LED CANDY RACK LIGHTING AT THIS LOCATION. RECEPTACLE TO BE MOUNTED 1'-4" A.F.F. IN THE SIDE NEAREST THE CASHIER AND ACCESSIBLE TO THE VISU COOLER CONNECTION. FACE PLATE TO BE PAINTED TO MATCH CHECKOUT STAND COLOR. COORDINATE LOCATION WITH PRE-WIRED CONTROLS MOUNTED INSIDE THE CHECKOUT.
 3. CASH REGISTER CIRCUITS SHALL BE PROVIDED WITH DEDICATED NEUTRAL AND GREEN ISOLATED GROUND.
 4. BX CABLES SHALL BE INSTALLED WITH INSULATED THROATS AND APPROVED CONNECTORS.
 5. ELECTRICAL CONTRACTOR SHALL LEAVE A PULL STRING IN CEILING J-BOX AT COMMUNICATIONS SECTION OF "TELE-POWER" POLE FROM THE COMMUNICATION JUNCTION BOX TO EACH CHECKOUT FOR USE BY OTHERS.
 6. ELECTRICAL CONTRACTOR SHALL COORDINATE TELEPOLE LOCATIONS WITH LIGHTING & HVAC PRIOR TO INSTALLATION TO MINIMIZE INSTALLATION CONFLICTS.

- CHECKOUT WIRING LEGEND**
- DIRTY CIRCUIT No. 1 (BELT MOTOR, STAND LIGHT, GEN. RECEPT.)
 - DIRTY CIRCUIT No. 2 (VISU COOLERS)
 - CLEAN CIRCUIT No. 1 (REGISTER, CATALINA, DEBIT CARD, SCANNER & SCALE, SPARE RECEPT.)

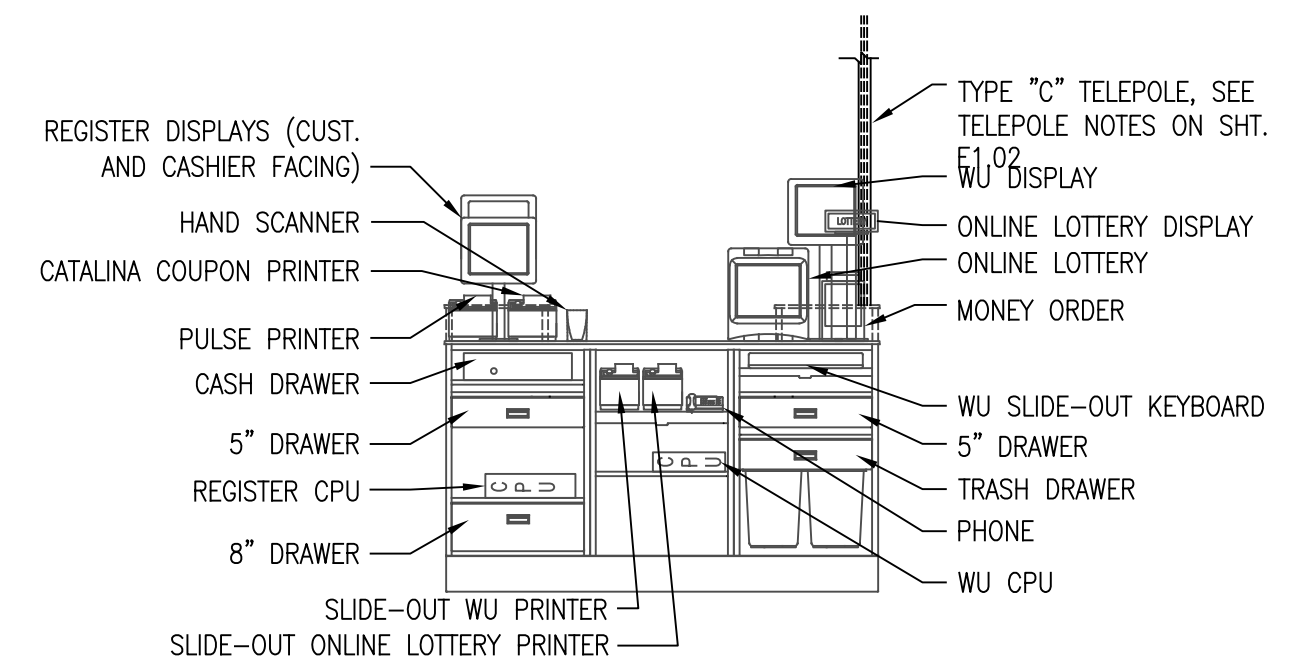
- ELECTRICAL WIRING KEY NOTES**
1. EXISTING PANEL SCHEDULE FOR PANEL OW, CR NOT LABELED CORRECTLY. ELECTRICAL CONTRACTOR TO TRACE AND FIELD VERIFY EACH CIRCUIT IN PANEL OW AND PROPERLY LABEL CIRCUITS IN TYPED WRITTEN PANEL SCHEDULE IN PANEL.
 2. ELECTRICAL CONTRACTOR TO CONNECT POWER FOR NEW CHECK STAND "DIRTY POWER" AND VISU COOLERS TO EXISTING CIRCUITS IN PANEL OW MADE SPARE BY REMOVAL OF EXISTING CHECK STAND EQUIPMENT.
 3. ELECTRICAL CONTRACTOR TO RECONNECT RELOCATED EQUIPMENT TO EXISTING CIRCUITS AT NEW LOCATION. EXTEND EXISTING CIRCUITRY AS REQUIRED.
 4. VERIFY EXISTING CONDITIONS- CIRCUIT TO BE DEDICATED FED FROM CR PANEL, RE-CIRCUIT AS NECESSARY.
 5. ELECTRICAL CONTRACTOR TO CONNECT NEW EQUIPMENT TO NEW CIRCUITS OR REUSE EXISTING CIRCUITS AS REQUIRED. CONDUITS ON THIS WALL TO BE RECESSED WHERE POSSIBLE.
 6. DEDICATED 120V RECEPTACLES FOR NEXGEN DATA CABINET PROVIDED AND INSTALLED ABOVE CEILING BY SEPARATE OWNER CONTRACTOR.
 - 7.



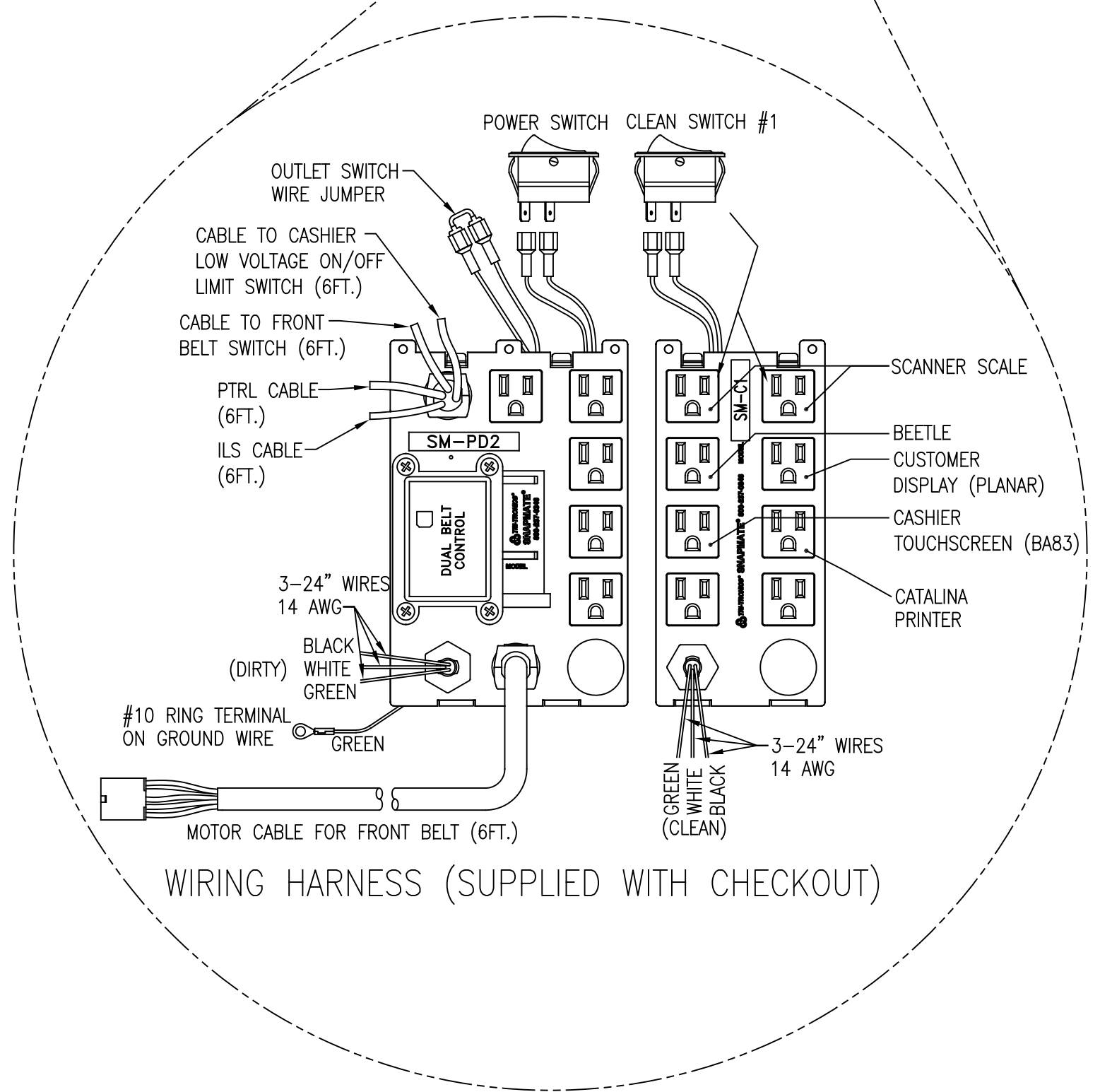
1 ENLARGED ELECTRICAL POWER PLAN
E4.02 SCALE : 3/16" = 1'-0"



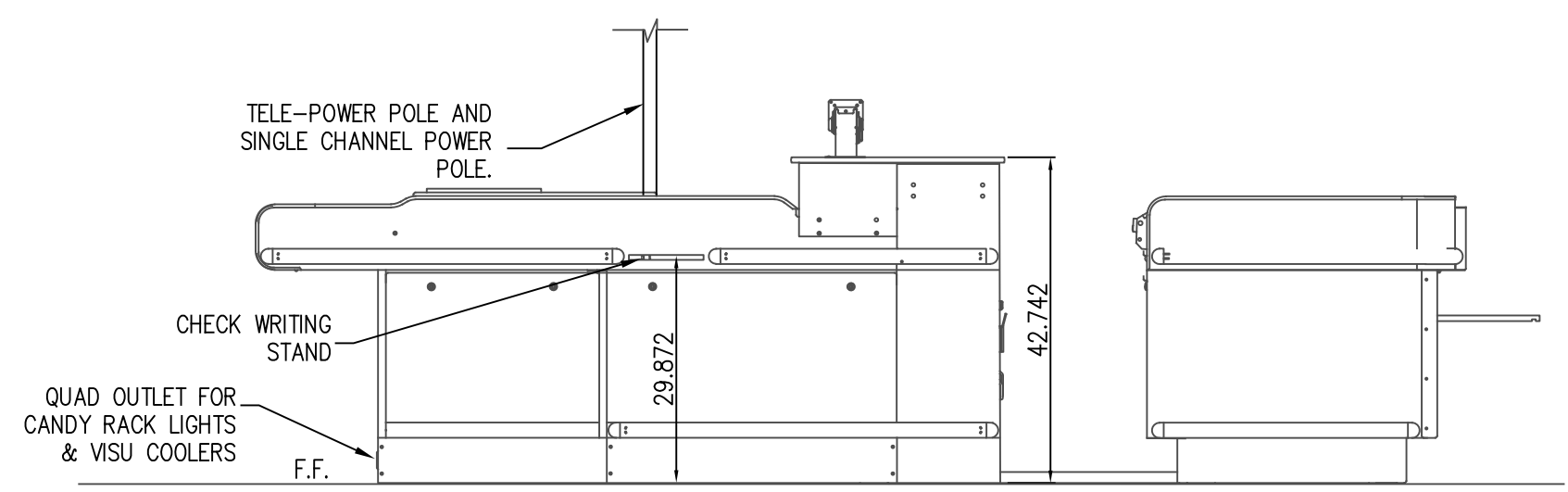
4 ASSOCIATE SIDE ELECTRICAL ELEVATION
E4.02 SCALE : NONE



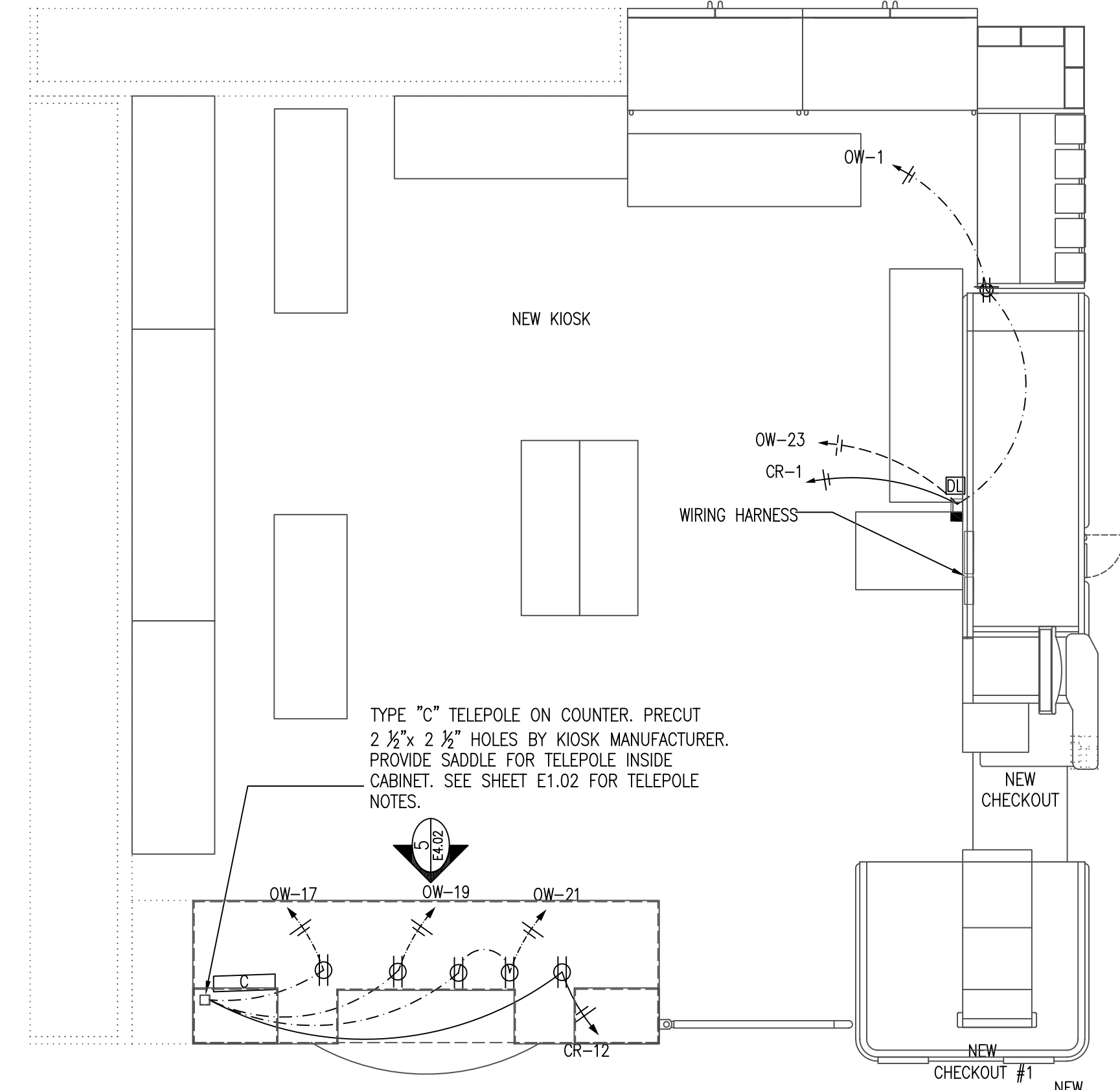
5 CUSTOMER SERVICE KIOSK ELECTRICAL ELEVATION
E4.02 SCALE : NONE



WIRING HARNESS (SUPPLIED WITH CHECKOUT)



3 CUSTOMER SIDE ELECTRICAL ELEVATION
E4.02 SCALE : NONE



2 CUSTOMER SERVICE KIOSK ELECTRICAL PLAN
E4.02 SCALE : 1/2" = 1'-0"